

FILTERCOMM



**OIL MIST
COLLECTORS**

SPACE



FILTERCOMM
SPACE

Versatile, modern design industrial air filters

FILTERCOMM presents a range of compact and easy to maintain oil mist collectors available in **six models**.

SPACE



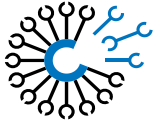
250 / 500



1000 / 1500



2000 / 2500



1

Air entry:

Air inside the machine tool is channeled into the air filter's suction inlet thanks to its **fan**. The centrifugal effect favours recondensation of the small oil particles.

2

Main filter:

The air crosses the main filter element consisting in a **special polyurethane sponge filter or, in alternative, in a folded cartridge filter** with coalescent sleeve.

3

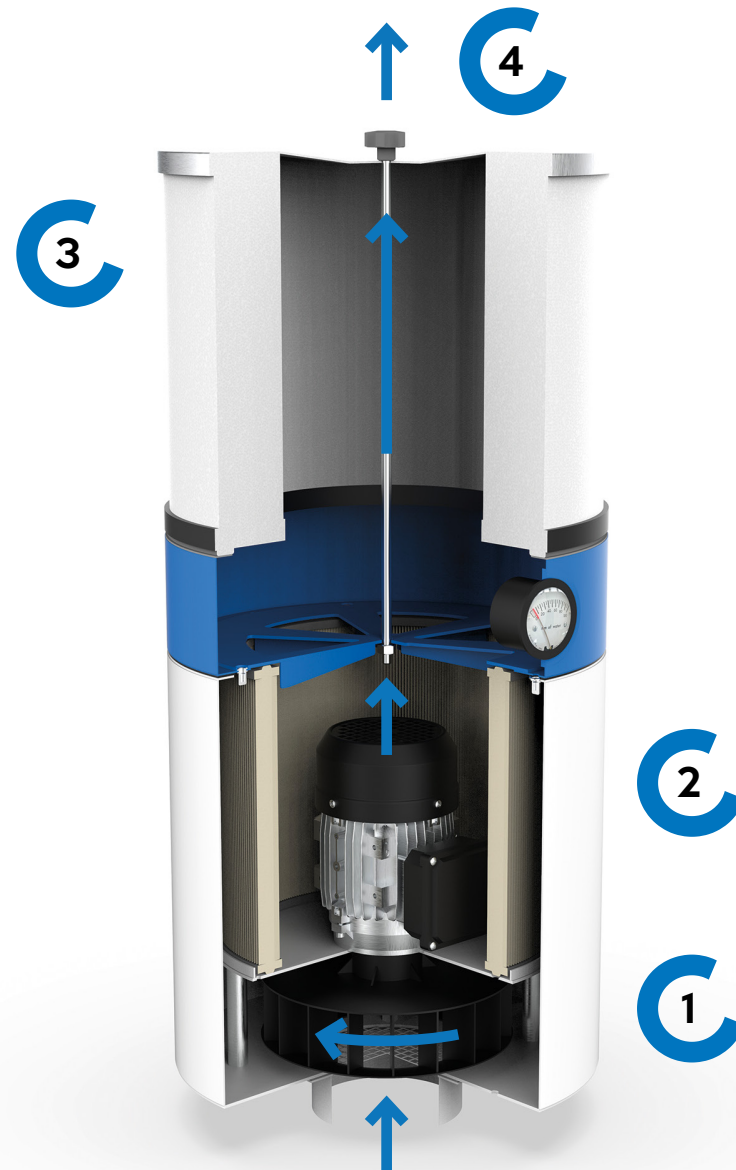
Post-filter (optional):

Proceeding towards the top, the air passes through a last filtration stage consisting in an **absolute HEPA filter**, class H13.

4

Air exit:

Filtered air is reintroduced into the working environment and the re-condensed oil is discharged by a drainage outlet.



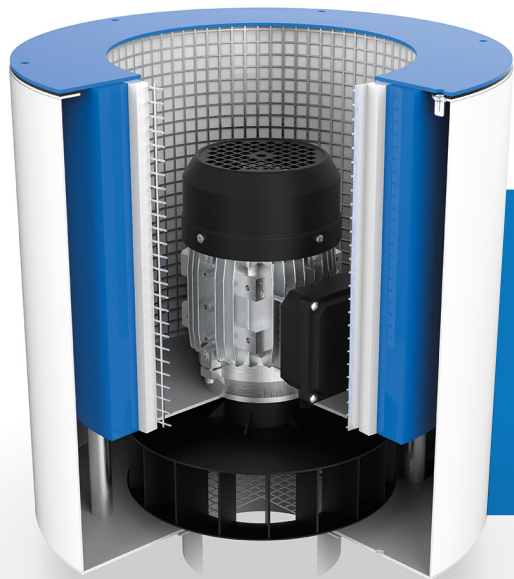
SPACE
ADVANTAGES

Modular:

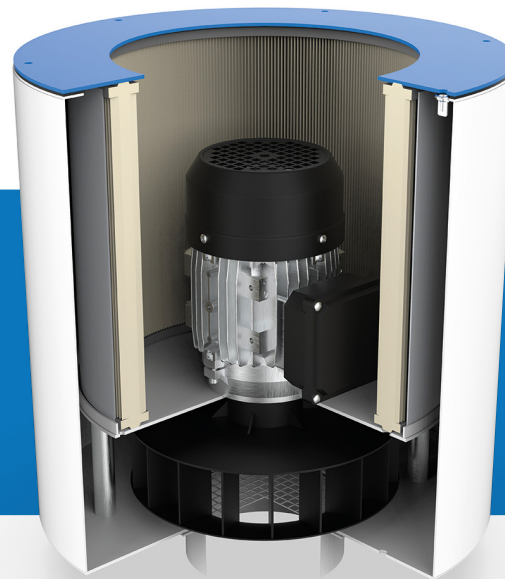
Six models with different flowrates and motor powers to suitably match your machine tool size.

Energy efficiency:

Oil mist collectors fitted with special centrifugal fans which guarantee high performance and low energy consumption.



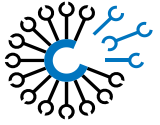
**Filter sponge
standard supplied**
G3 efficiency



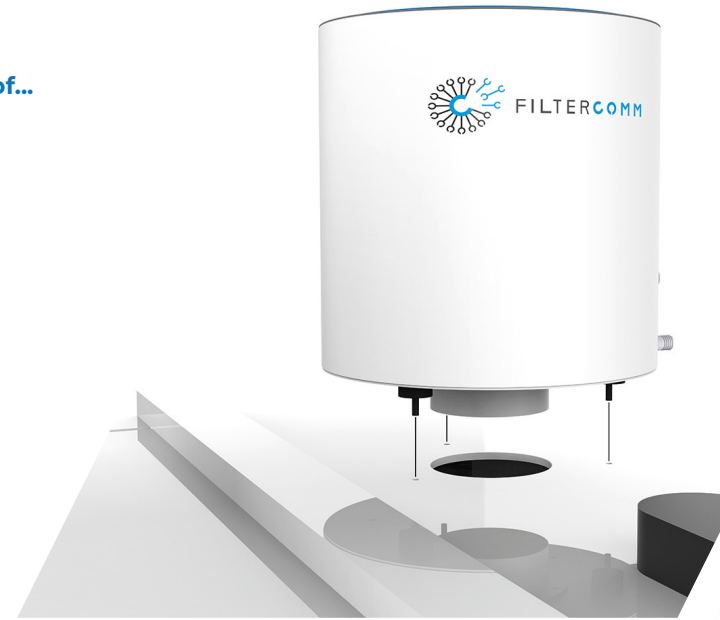
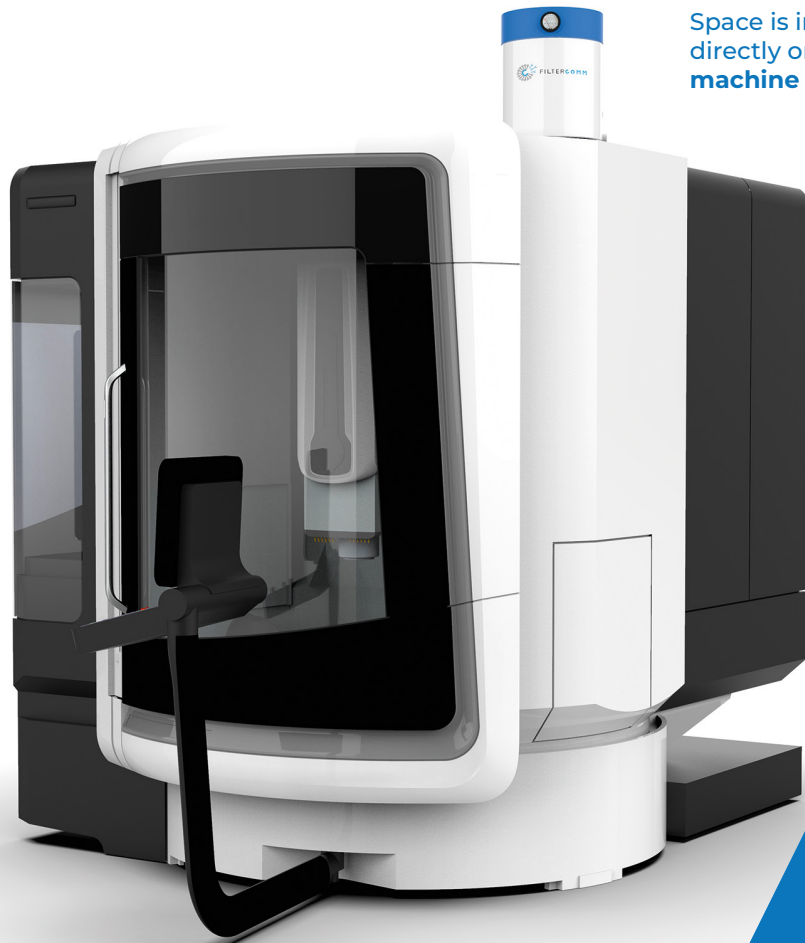
**Optional
cartridge filter**
F9 cellulose cartridge
filter with coalescent
filter sleeve

Versatile:

A choice between two different filter elements **without needing to make structural changes to the filter unit.**



Space is installed directly on the machine tool roof...



Easy installation:
Directly on the machine tool, no need for installation accessories; quick and easy.



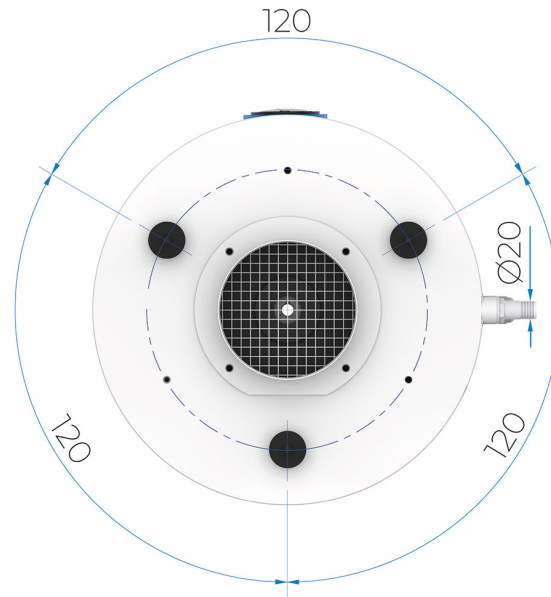
...OR
on a stand next to the machine tool!

Manometer:
Two filtration stages, each one monitored by its own manometer, to guarantee maximum filtration efficiency.



SPACE

DIMENSIONS AND TECHNICAL DETAILS



Space

A

B

C

D

E

F

250 / 500

380

360

110

300

100

290

1000 / 1500

420

420

110

350

150

300

2000 / 2500

480

440

110

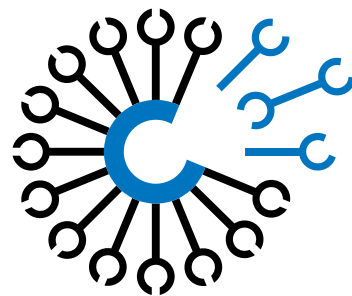
350

200

360



	250	500	1000	1500	2000	2500
Flowrate (m³/h)	250	500	1000	1500	2000	2500
Pressure (mm H₂O)	20	20	40	51	66	80
Power (kW)	0,12	0,18	0,25	0,55	0,75	1,1
Weight (Kg)	24	24,5	29	30	37	39
Noise level without HEPA (dB)	58	60	66	70	75	78



all in one.