

FILTERCOMM

**OIL MIST
COLLECTORS**



STAR

Industrial filters for centralised solutions and high flowrates

State of the art oil mist collector range offering **eight models** designed for centralised filtration solutions or for large machine tools.

STAR



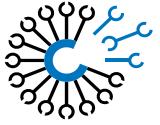
10 / 12

7 / 8

4 / 5

2 / 3

STAR
WORKING PROCESS

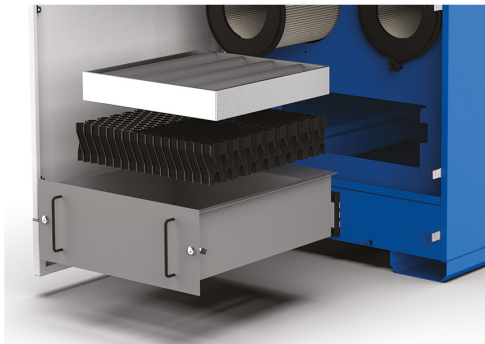


1

Air entry:

The air enters a **calming chamber** which serves to slow down the air speed and enables the condensation of the oil particles.

2



Pre-filtration:

The air passes through two washable filter elements: a **drop separator** and a **metallic filter**, both contained in an extractable drawer to enable fast and easy maintenance.

3

Main filtration:

This area contains **folded cartridges** with a wide filtration surface and high filtration efficiency for treatment of the finest pollutants. The cartridges are covered by highly absorbent coalescent filter sleeves which lengthen the filter cartridges' life.

4

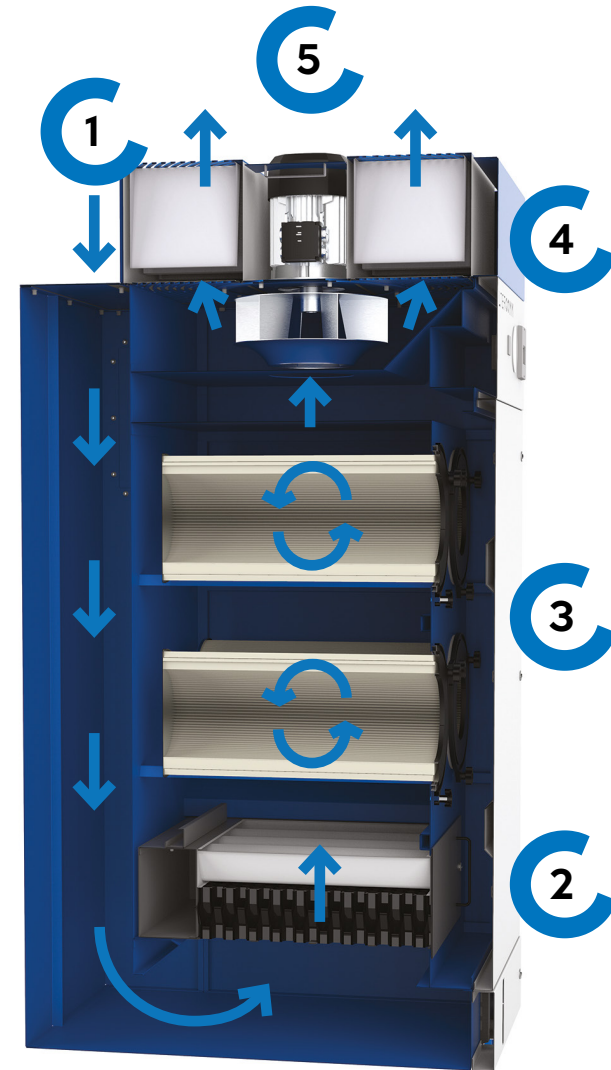
Post filtration (optional):

Absolute HEPA filter very high efficiency, H13 classification.

5

Air exit:

The clean air can be released back into the work environment or externally by means of an air expulsion chimney.



STAR ADVANTAGES

Clean air:

Progressive filtration consisting of five different filter elements to ensure healthy air quality in the workshop.

Filter control:

STAR is standard supplied with a differential manometer to continuously monitor filter clogging status.



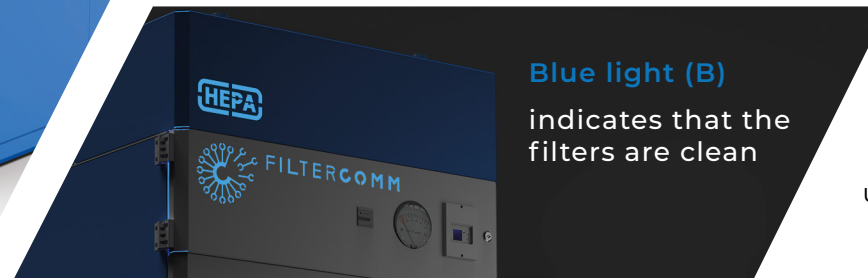
Red light (R)

indicates that the filters must be replaced



Green light (G)

indicates initial clogging of the filters



Blue light (B)

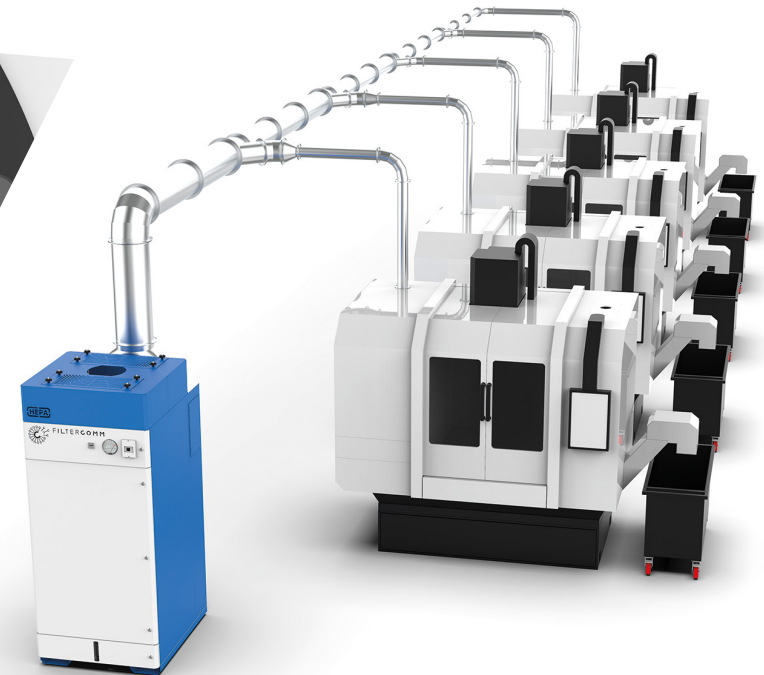
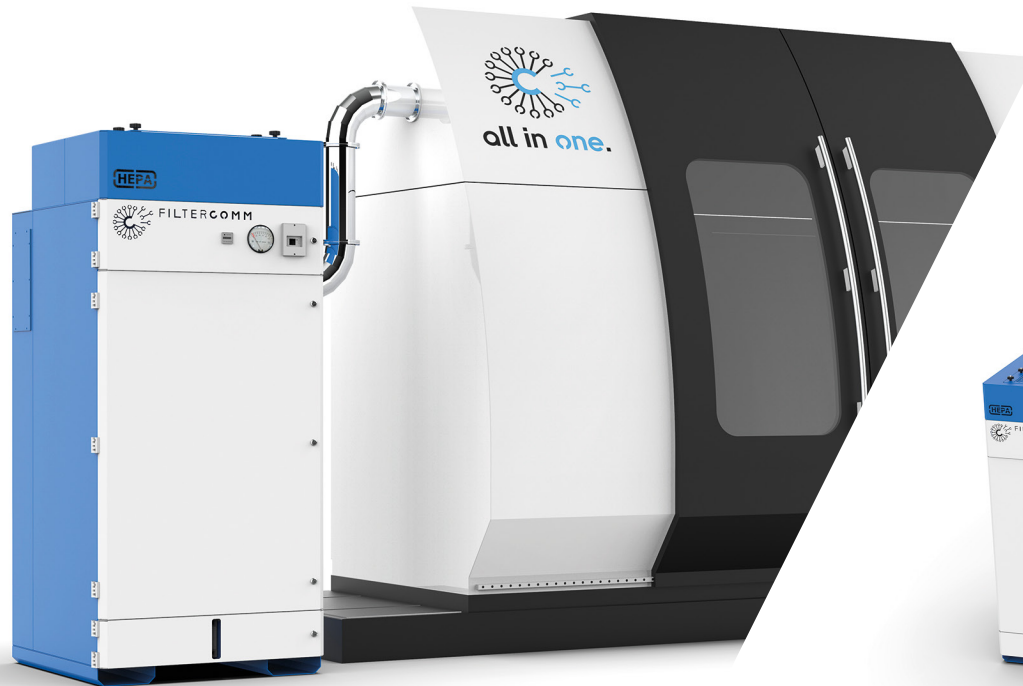
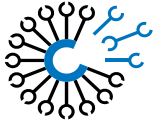
indicates that the filters are clean

SMART LED:

An intelligent visual system combined with RDP1 to indicate the state of the filter elements.

RDP1:

A digital control unit in alternative to the manometer, to monitor the unit's main operating parameters.



Installation on a single machine:

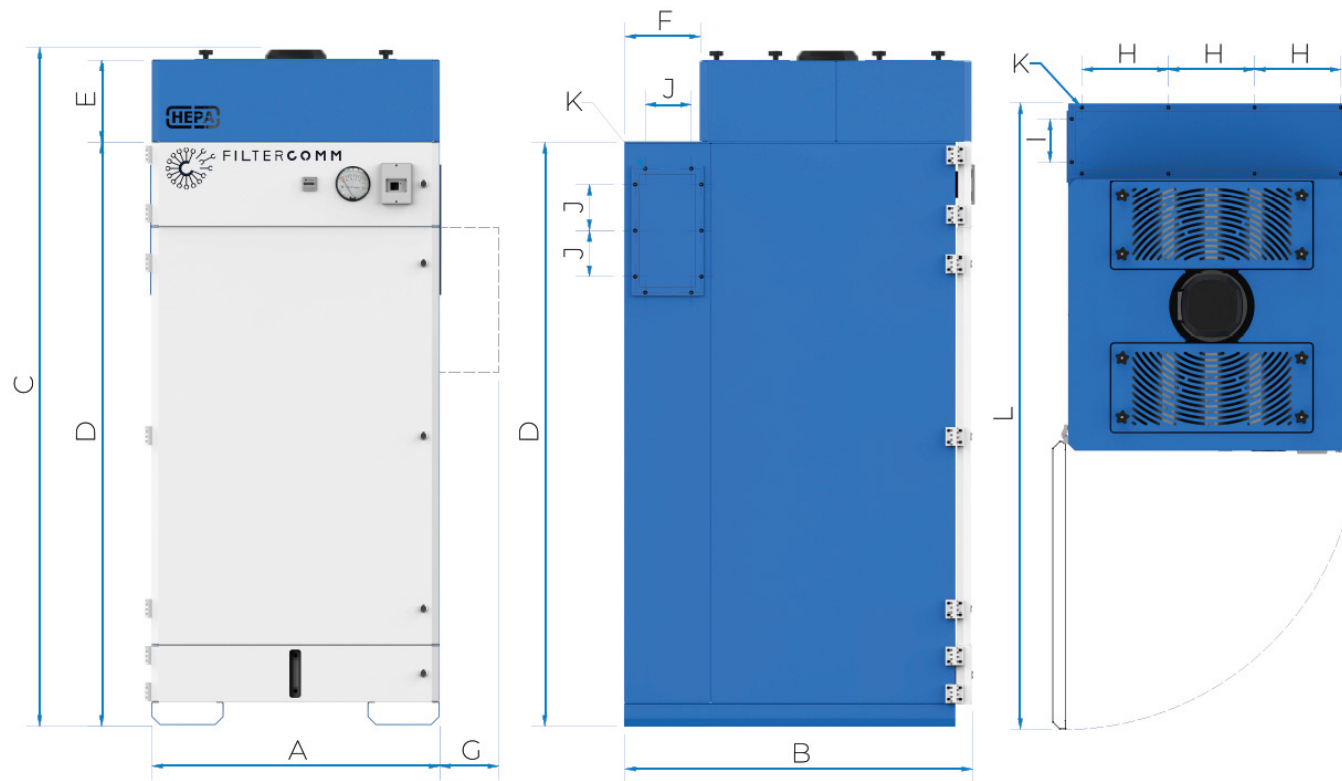
The STAR range is designed for installation on a single machine tool with large dimensions.

Centralised installation:

STAR is also suitable for centralised installation on multiple machine tools.



STAR
TECHNICAL DETAILS

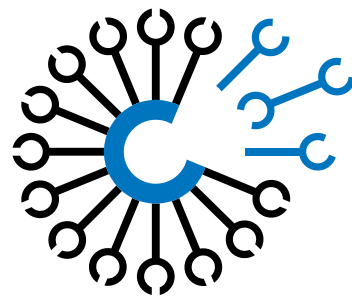


Star	A	B	C	D	E	F	G	H	I	J	K	L
2 / 3	650	1210	2350	2030	300	261	0	180	150	160	M8	1800
4 / 5	1000	1210	2360	2030	300	261	0	300	150	160	M8	2200
7 / 8	1450	1260	2450	2030	300	311	300	300	150	160	M8	2600
10 / 12	1450	1260	3030	2520	300	311	300	450	150	160	M8	2600



2 3 4 5 7 8 10 12

Power (kW)	1,5	2,2	3	4	5,5	7,5	11	15
Max. flowrate (m³/h)	2.200	3.000	4.100	5.000	6.800	8.000	9.800	12.000
Pressure (mm H₂O)	115	150	160	200	220	250	280	300
N° of cartridges	2	2	4	4	6	6	9	9
Filtration surface (mq)	20	20	40	40	60	60	90	90
Weight (Kg)	315	325	450	472	571	593	788	830
Noise level w/out HEPA (dB)	< 75	< 75	< 80	< 80	< 80	< 80	< 85	< 85



all in one.